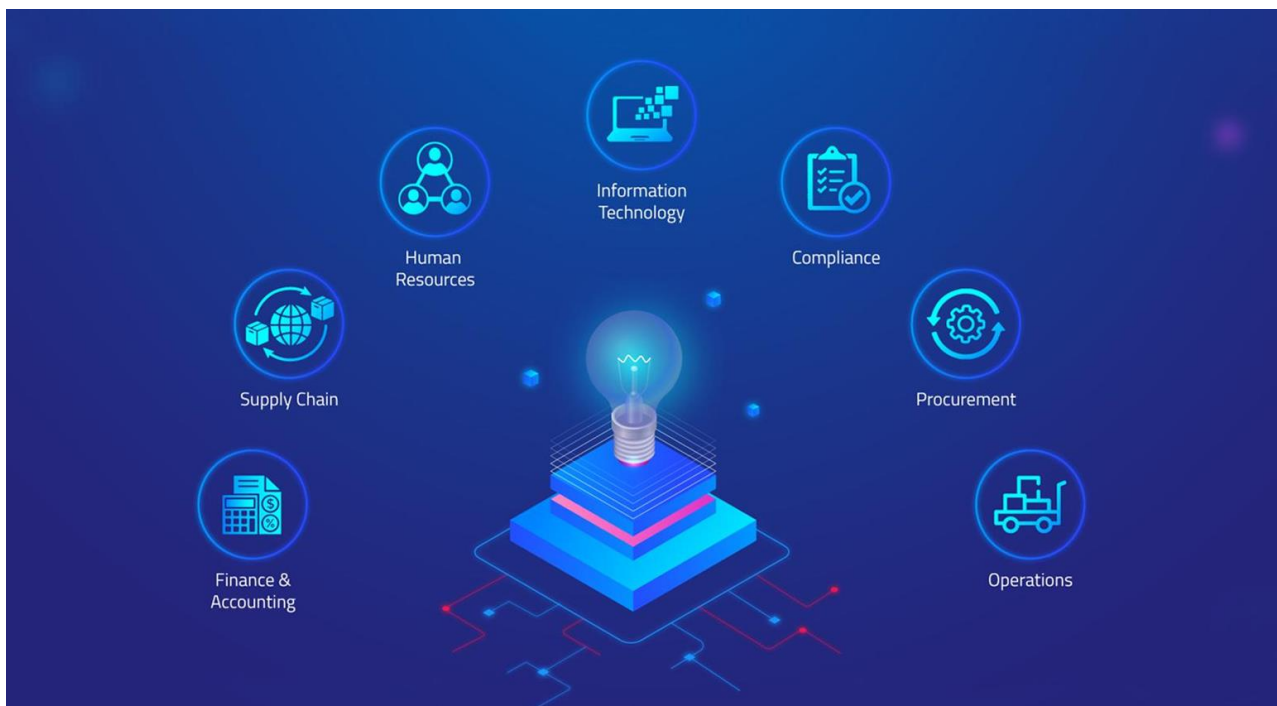


## Core Competencies

NITCO Inc. is a technology services company that accelerates digital automation with Artificial Intelligence, Machine Learning, Natural Language Processing, Conversational AI, Chatbots and Robotic Process Automation (RPA). In addition, the company has highly skilled staff serving our clients in Integration Technologies, Data Analytics, Cloud Integration Services, and various IT Technical Consulting services.

Our technology experts and business consulting professionals follow project management and software development principals and best practices. We have the knowledge, experience and skills to analyze, research, design, develop, test, and train on the digital technology solutions in the areas of:



- Robotic Process Automation (RPA)
- Artificial Intelligence (AI)
- Natural Language Processing (NLP)
- Machine Learning (ML)
- Custom Software Development
- Conversational AI, Chatbots and Intelligent Virtual Assistants
- Intelligent Automation
- Cloud Integration with iPaaS solutions
- Integration of applications and data sources

## Services include

Staff Augmentation  
for Technical  
Resources

Hosted and  
Managed Support  
and  
Maintenance

Technology  
Health Assessments  
for Digital  
Technology

On-Demand  
or  
Project Based  
Services

RPA as a Service

Technology  
Architectural  
Design

## Authorized Software Reseller and Implementer



## How We Are Different

### DIFFERENTIATORS

#### Quality

NITCO is passionate about the quality of our delivery to our clients. Our quality begins with the talented resources we hire and the continual training we provide them. We require all resources to be certified and experienced in their field of expertise. Our quality is manifested by the methodology and best practices we follow. Our quality is guaranteed with a complimentary ten-day hyper-care warranty.

## Customer Focused

NITCO is flexible to satisfy most client needs for digital technology with our personalized service. We offer project-based implementations, staff augmentation, and on-going support services. We also recognize that one size does not fit all and can offer recommendations on the best technical solutions for client needs.

---

## Best Practices

Our NITCO professionals embody the best practices in our digital technology implementations. This is based on our technology partner standards and professional experience as well as best practices for development, business consulting, and project management.

---

## Trusted Partner

Our ultimate goal at NITCO is for our clients to be successful with the right solution at the right time. We only promise what we know we can deliver. We always stand by our workmanship.



NITCO has offered our clients the following project-based or staff augmentation resource technology skills as a subcontractor to the Prime Contractor or direct to clients for the past thirteen (13) years.

- Java full-stack Developer/Engineer
- .Net full-stack Developer/Engineer
- UI/UX Developer/Engineer
- DevOps Developer/Engineer
- IBM WebSphere Developer/Engineer
- IBM Middleware Developer/Engineer
- IBM MDM Developer/Engineer
- IBM SOA Developer/Engineer
- Software Validation Developer/Engineer
- Kore.ai Developers
- Kore.ai Designers
- Kore.ai Architects
- Project Management Professionals
- Microsoft Azure Developers
- Zuora Netsuite Developer/Engineer
- SCCM Developer/Engineer
- SAP Basis Developer/Engineer
- SAP FICO Developer/Engineer
- Boomi Solution Architect
- Boomi Developer
- Automation Solution Architect
- Automation and AI Developers
- Oracle DBA, Developers
- Digital Automation Business Analyst
- Scrum Master
- Workato Integration Developers
- Azure AI Developers



Certified Minority Owned Business Enterprise (MBE)



Certified Small Disadvantaged Business Enterprise (SDBE)



Certified Historically Underutilized Business (HUB)

**NITCO Inc.**  
440 Cobia Drive, Suite 1701  
Katy, Texas 77494  
[www.nitcoinc.com](http://www.nitcoinc.com)  
[YourPartner@nitcoinc.com](mailto:YourPartner@nitcoinc.com)

**Contact:**  
Lance Shealy, Sales Director  
[lshealy@nitcoinc.com](mailto:lshealy@nitcoinc.com)  
O-(281) 503-7002

Chandra Yatagiri, President & CEO  
[chandra@nitcoinc.com](mailto:chandra@nitcoinc.com)  
O-(281) 503-7128